

BARRIERE

Zerbino tecnico in PVC / Technical PVC doormat

SCHEDA TECNICA / TECHNICAL DATA SHEET

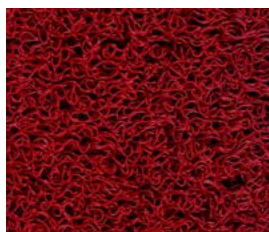
DIMENSIONI / DIMENSIONS	DRENANTE	PLUS
Spessore / Thickness	14,0 +/- 2 mm	10,0 +/- 2 mm
Diametro filo ca. / Coil diameter approx.	1,0 mm	0,4 mm
Peso / Weight	5,0 +/- 0,3 kg/m ²	3,2 +/- 0,3 kg/m ²
Lunghezza rotoli ca. / Roll length approx.	6,0 m	6,0 m
Larghezza rotoli / Roll width	120 ± 2 cm	120 ± 2 cm
Rovescio / Backing	Drenante / Draining	Schiuma in PVC / PVC foam

PROPRIETÀ VERIFICATE / VERIFIED PROPERTIES	STANDARD	VALORI / VALUES
Classificazione al fuoco / Fire classification	EN 14041	Bfl-s1

ATTENZIONE / ATTENTION

Per quanto non espressamente riportato, progettazione, posa e manutenzione, fare riferimento alla normativa UNI 11515-1 e UNI 11515-2 / For all aspects not explicitly mentioned, regarding design, installation, and maintenance, please refer to UNI 11515-1 and UNI 11515-2 standards.

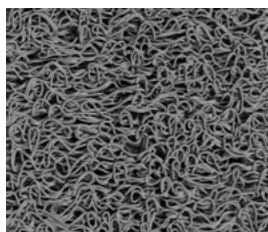
DECORI DISPONIBILI / AVAILABLE DECORS



Rosso - W1103



Marrone - W1201



Grigio Chiaro - W1301



Piombo - W1351



Blu - W1401



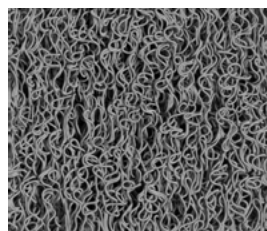
Blu Navy - W1451



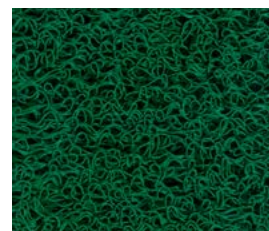
Nero - W1601



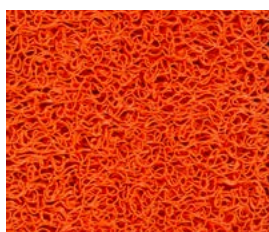
Cocco - W1701



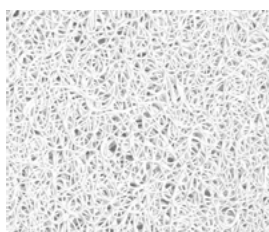
Beige - W1751



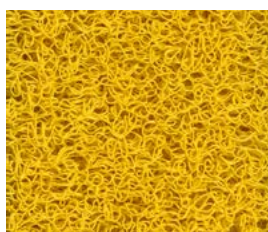
Smeraldo - W1801



Arancio - W1901



Bianco - W2001



Giallo - W2101

I colori mostrati sono solo indicativi e non vincolanti, le tonalità effettive possono differire a seconda delle postazioni dello schermo o della stampante / Colors shown are only indicative and not binding, actual shades may differ depending on screen or printer locations



v.01